



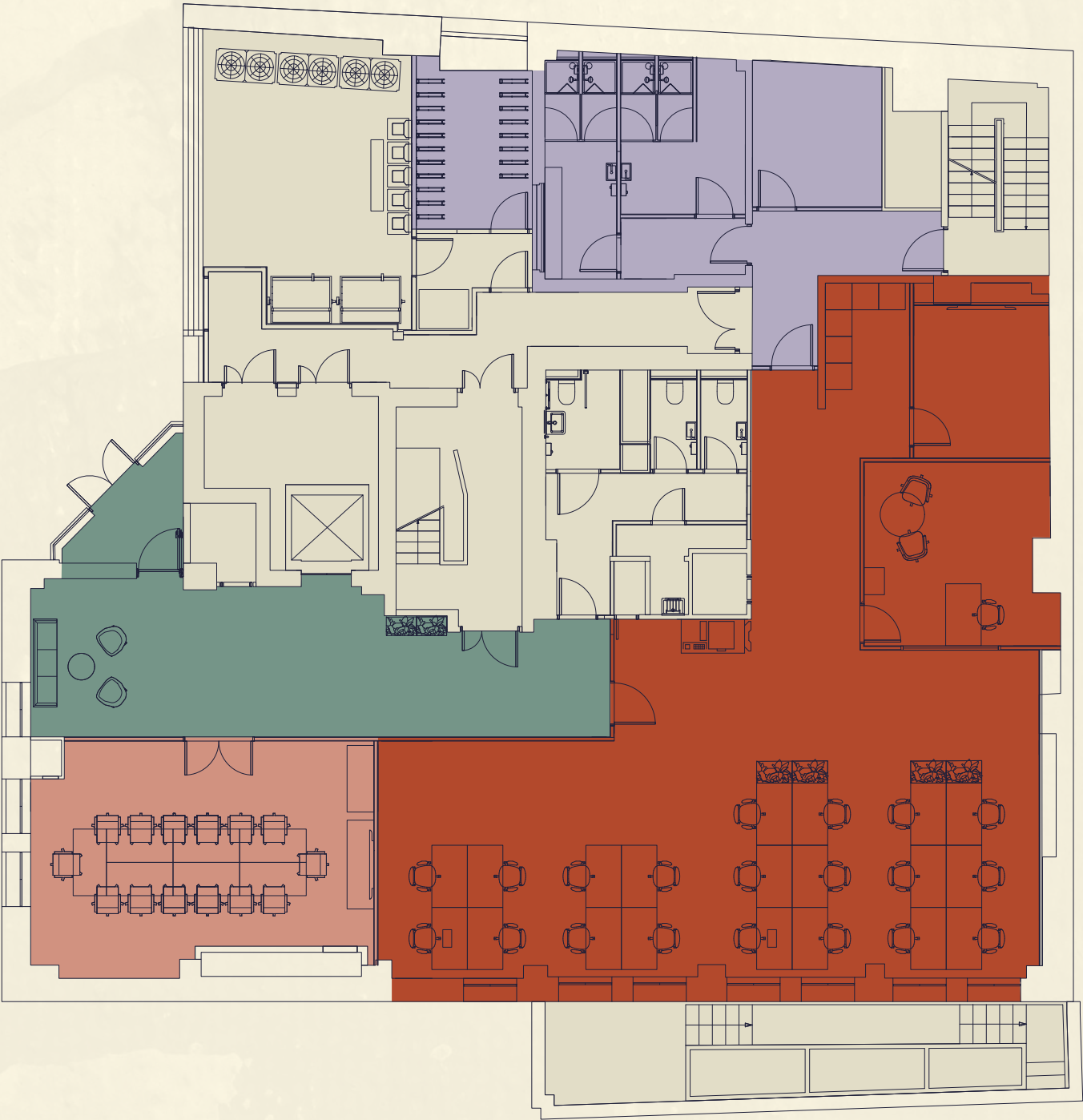
# 12 Harcourt Street

Marylebone W1

Floor	Use	Sq Ft	Sq M
Third	Office	2,159	200.6
Second	Office	2,440	226.7
First	Office	3,147	292.4
Ground	Office	2,284	212.2
	Reception	609	56.6
Garden	Office	1,593	148.0
	Boardroom	428	39.8
Total Office		12,662	1,176.3

## GARDEN FLOOR 2,021 SQ FT / 187.8 SQ M

Workstations	12	Showers	04	14 person communal boardroom	01
Private offices	02	Bicycle racks	10	Teapoint	01
10 person boardroom	01	Communal lobby	01		



HARCOURT STREET

## GROUND FLOOR 2,284 SQ FT / 212.2 SQ M

Workstations	10	Reception area	01	Teapoint / breakout area	01
Private offices	05	Terrace	01		



HARCOURT STREET

● Office ● Communal boardroom ● Reception ● Communal lobby ● End-of-journey facilities ● Terrace ● Core

Floorplans not to scale. Indicative only.

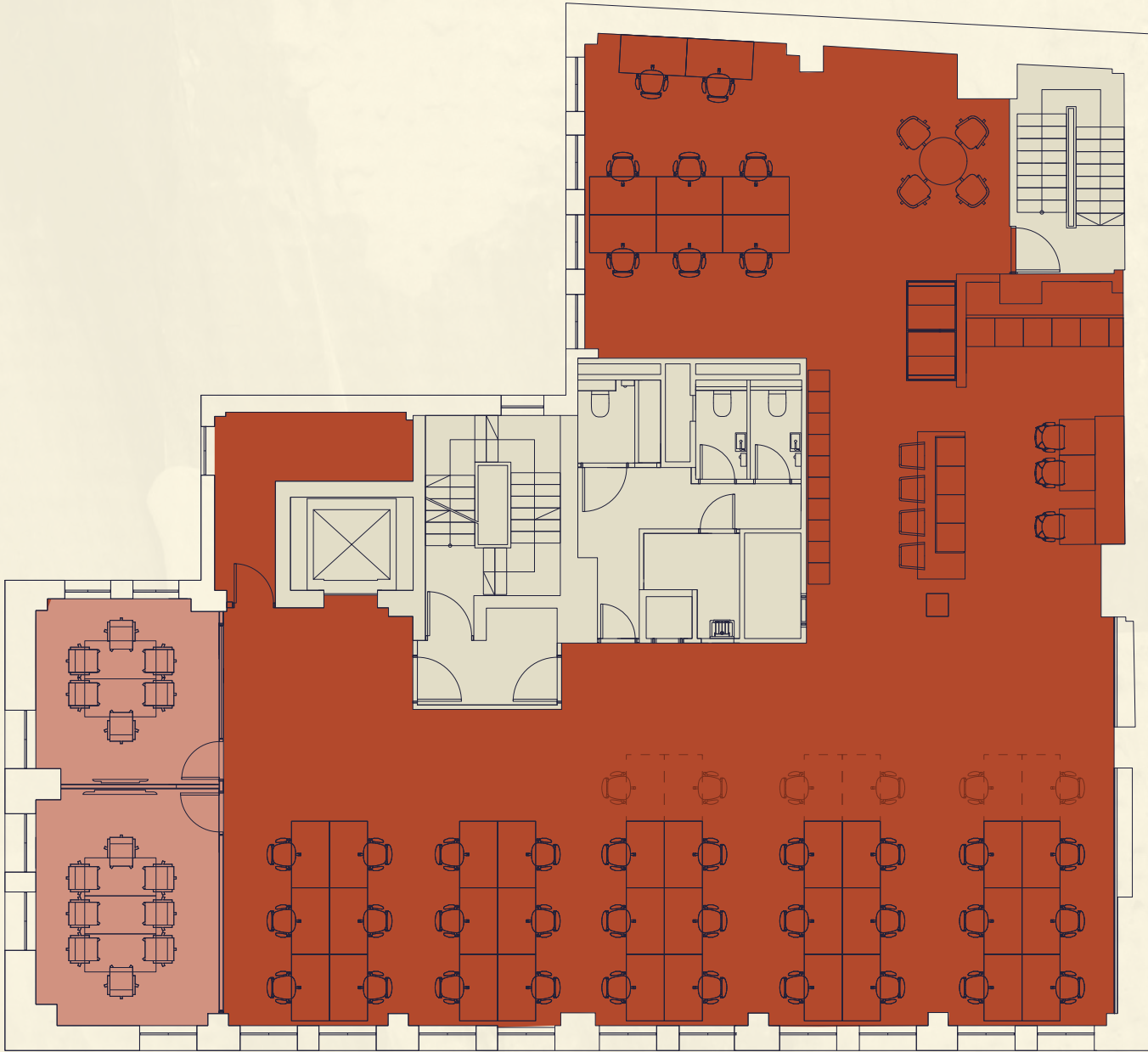




# FIRST FLOOR

3,147 SQ FT / 292.4 SQ M

Workstations	44	6 person meeting room	01	Teapoint / breakout area	01
Zoom booths	02	8 person meeting room	01		

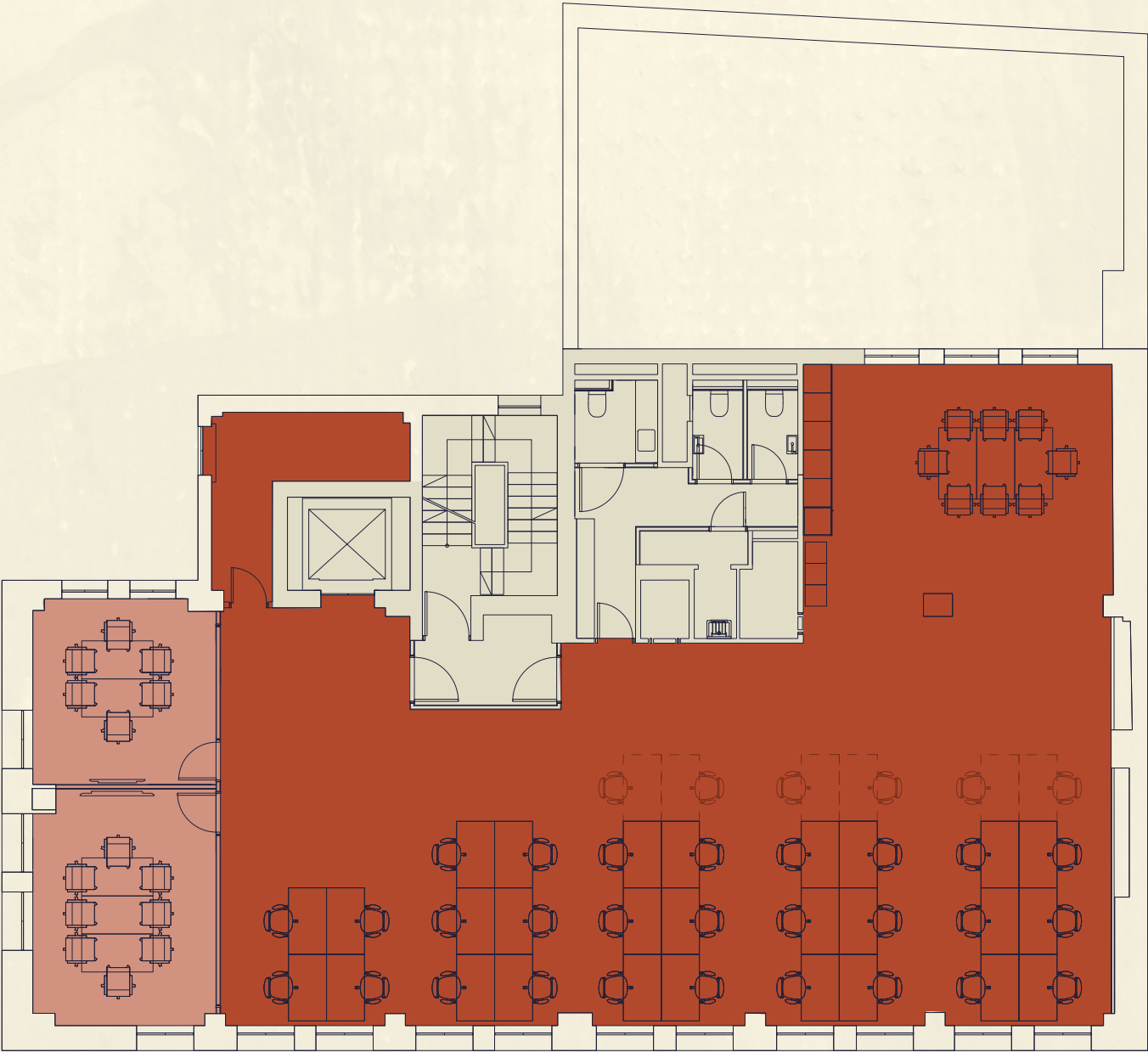


HARCOURT STREET

# SECOND FLOOR

2,440 SQ FT / 226.7 SQ M

Workstations	28	6 person meeting room	01	Teapoint / breakout area	01
		8 person meeting room	01		

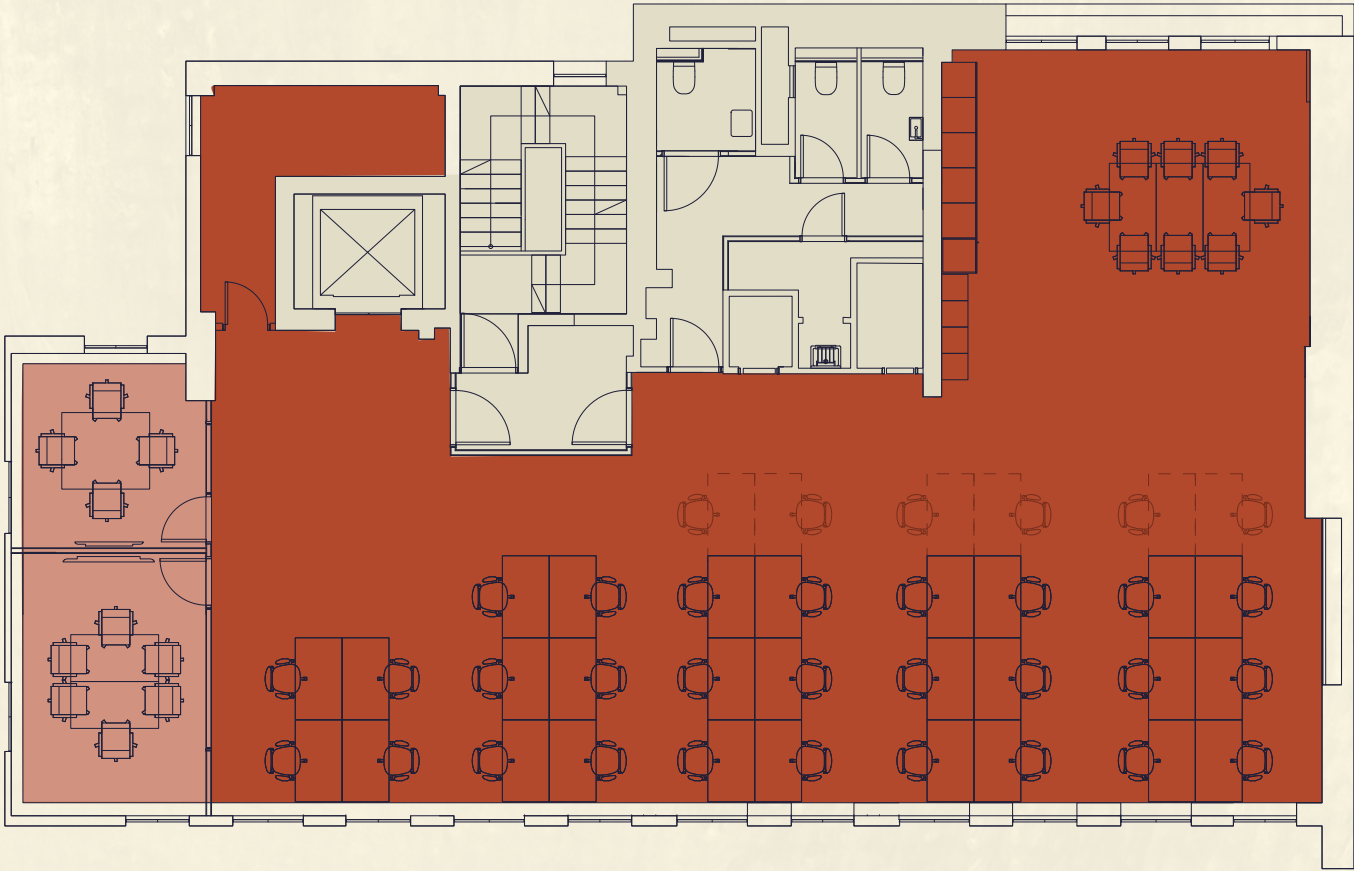


HARCOURT STREET

# THIRD FLOOR

2,159 SQ FT / 200.6 SQ M

Workstations	28	4 person meeting room	01	Teapoint / breakout area	01
		6 person meeting room	01		



HARCOURT STREET

